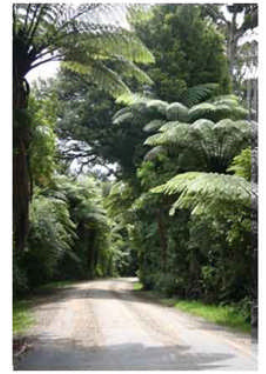


# The Trust

Information Sheet



**“Ensuring the long term survival of kiwi in Otanewainuku Forest, preserving our taonga of native flora and fauna for generations to come.”**

Otanewainuku Conservation Area is 1,200 hectares of unique virgin New Zealand bush located 25 km south of Tauranga. Thanks to local landowners this forest has never been logged. The Otanewainuku Kiwi Trust is a community based conservation Trust formed in 2002 by Te Puke Forest and Bird and other members of the local community concerned at the decline of North Island brown kiwi in the Otanewainuku forest. The Trust operates under a Memorandum of Understanding with the Dept of Conservation (DOC) who administers the area. Local Iwi support and assist our vision.

## Trust structure

The Trust has a three-tiered volunteer structure, with a Board of Trustees, Operations Committee, Fundraising Committee and over 80 other volunteers. The trustees meet every two months, holding the Trust's vision and developing strategies. The Operations Committee meet monthly and oversee the day to day running of the Trust; they also research and prepare recommendations on subjects such as “integrated pest control” for the Trustees. Volunteers are the life blood of the trust, with many thousands of km travelled and approximately 5000 volunteer hours given each year. Work includes clearing trap lines, making traps, checking and baiting traps, co-ordinating volunteers, monitoring kiwi using radio tracking equipment, administration, newsletters, and sausage sizzles.

## Kiwi numbers

Surveys at Otanewainuku indicate that kiwi numbers have dropped from around 50 birds in 1984 to as low as 5 in 2006. While Otanewainuku provides near perfect kiwi habitat, they are under pressure from stoats and ferrets (mustelids), feral cats and dogs. Nationally the kiwi population is halving every 10 years with 70% of chicks hatched killed by stoats and ferrets.

## Initial Focus

The initial focus of the Trust was to protect our remnant kiwi population and make Otanewainuku forest a safe environment for future kiwi releases. As the Trust has grown it has been able to develop an integrated pest management programme, which has benefits for all flora and fauna at Otanewainuku. Mustelid trapping began in late 2002. In spring 2006 we targeted possums and rats in a toxin operation. Our pest control was so successful we were given permission by DOC to reintroduce kiwi. In autumn 2007 we released four kiwi (one male and three females) back into Otanewainuku.



## Future Vision of the Trust

1. **Restored forest:** To return to the Otanewainuku forest of 100 years ago. To build kiwi numbers and later to return kokako to our forest.
2. **Kiwi Crèche:** Our next project is the construction of a 21 hectare kiwi crèche on private land adjacent to the Otanewainuku Mountain. Kiwi chicks can be raised in safety to a size where they are stoat proof, then released into the wild.
3. **Education Centre:** Long term we envisage a centre at the foot of the mountain where groups can come and experience unique mainland virgin forest at its best.

The Trust has won numerous awards for its conservation work. You can help by becoming a member, sponsoring a hectare, or sponsoring a fence post in our crèche.

**We are grateful for the support of many individuals and organisations including:**

